

Instruction Manual

(RGB-30W Animation Laser Lighting)



This user manual contains important information about the safe installation and use of this product. Please read and follow the instruction carefully and keep this manual in a safe place for future reference.



Professional Laser Lighting

Getting Started

Thanks for selecting our product, please read and follow the instruction carefully and keep this manual in a safe place for future reference.

This high power laser projector is made of Aluminum housing, with

elegant appearance, energy-saving, long lifetime, suitable for indoor use.

The product is designed and produced strictly as per CE standard, in accord with international DMX512 protocol. One product can be controlled alone or many products can be controlled together for big shows, theaters, studios, KTV, walls of the hotel etc..

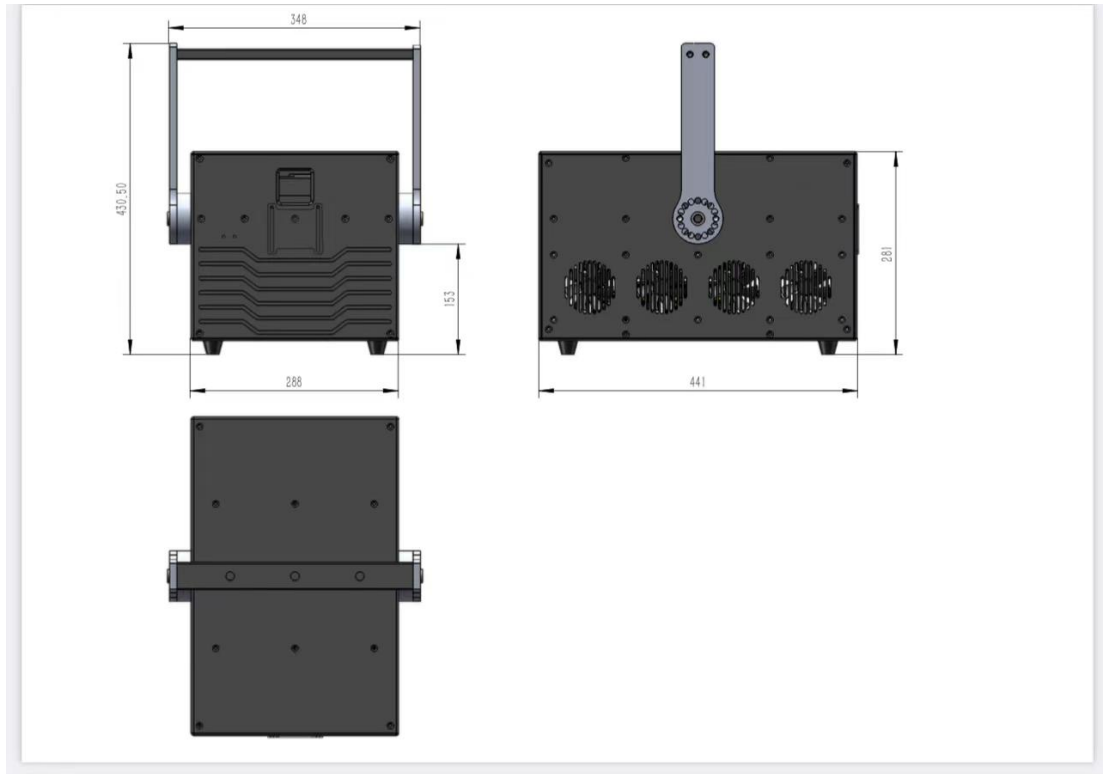
Security warning:

- 1、 When unpacking and before disposing of the carton, check if there is any transportation damage before using the product. Should there be any damage caused by transportation, consult your dealer and do not use the apparatus.
- 2、 Do not install the product or project the beam onto inflammable surfaces. Minimum distance is 5 M.
- 3、 The product is only intended for installation, operation and maintenance by qualified personnel.
- 4、 Product should install in a cool place. Keep away from the wall 50cm.
- 5、 Avoid direct exposure to the light from the lamp. The light is harmful to eyes.
- 6、 Keep the optical system clean. Do not touch the laser reflect lens with bare hands. Do not use any alcohol liquid or any other liquid to clean the optical system. Use medicinal absorbent cotton to clean it.
- 7、 Please do not attempt to dismantle and/or modify the product inner structure. Otherwise 1 year of warranty will get invalid.
- 8、 Before installation, ensure that the voltage and frequency of power supply match the power requirement of the product.
- 9、 It is essential that each product is correctly earthed and that electrical installation conforms to all relevant standards.
- 10、 Make sure that the power-cord is never crimped or damaged by sharp edges. Never let the power-cord come into contact with other cables. Only handle the power-cord by the plug. Never pull out the plug by tugging the power-cord.
- 11、 There is no user serviceable parts inside the product, do not open the housing and never operate the product with the cover removed.

Product Specification:

Description	Specification
Laser power	30W
Product name	RGB-30W animation laser lighting
Item code	GS-RGB30W
Laser module red	638nm 10W
Laser module green	520nm 10W
Laser module blue	445nm 12W
Special effect	Different patterns of colorful beam, wave and line
Beam size	6*9mm
Connector In	ILDA、SD card、DMX
Connector Out	ILDA、DMX
Voltage & power	220Vac, 50/60Hz ($\pm 10\%$), 1200W
Scanner	40Kpps
Operation temperature	-20 至 40℃
Net weight	32kg
Product size	441×348×281mm
Control mode	ILDA, SD card, auto, DMX 512

Product size display:



Main function:

Operation Mode	
Beyond/QS	Computer mode
DMX-512	DMX512 lighting console mode
ArtNet	ArtNet mode
sACN	--
Autoplay	Auto mode
Time code	Time code mode

LCD screen:



With the help of knob and LCD menu display, the operation is easy.

Turning the knob to see the function.

Click the knob to select the function, double click the knob to return to menu.

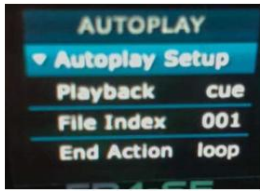
LCD menu and function introduction:



初级菜单	
Operation Mode	操作模式
Autoplay Setup	自走设置
Master Settings	激光灯设置
Geo correction	几何矫正
Color Settings	颜色设置
Scan Guard	光闸
FB4 Device Info	FB4版本信息



Operation Mode(操作模式选择)	
Beyond/QS	电脑软件模式
DMX-512	512控台模式
ArtNet	网口控台模式
sACN	没用过
Autoplay	自走模式
Time code	时间码模式

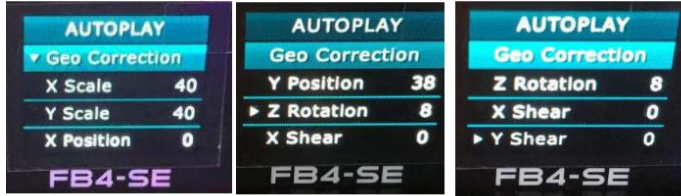


Autoplay Setup	
Playback	播放模式 (cue 单个播放, list 列表播放)
File Index	文件序列
End action	结束动作 (循环或者停止)



Master Settings	
Brightness Settings	亮度设置
Master Sizen	大小设置
X Scale	水平大小设置
Y Scale	垂直大小设置
Invert X	水平反向
Invert Y	垂直反向
Swap XY	X、Y互换
Rescan Time	重新扫描时间

备注: Master settings是全局设置



投影区域设置	
X scale	水平大小设置
Y Scale	垂直大小设置
X Position	水平位置设置
Y Position	垂直位置设置
Z Rotation	旋转
X Shear	水平切割
Y Shear	垂直切割



Color Settings	
Color Shift	颜色/闭光转换点 (尾巴长短)
Red	红色亮度调节
Green	绿光亮度调节
Blue	蓝光亮度调节
Deep Blue	没有
Yellow	没有



Scan Guard	
Enable Guard	选X, 没有光闸
Horizon Level	不做设置
Horizon Angle	不做设置
Min. Velocity	不做设置
Dwell Time	不做设置
Invert Y	不做设置

DMX512 function channels:

Channel	Function	Description
1	Function	0..31-Laser off 32..96- 4 Channel mode 97..160-8 Channel mode 161..224-12 Channel mode 225..255-16 Channel mode
2	Page selection	0..15-Page 1 16..31- Page 2 32..47- Page 3 . . . Maximum 9 pages
3	Program selection	0..31-Laser off 32..35- Program 1 36..39- Program 2 40..43 Program 3 . . . Maximum 48 programs per page
4	Play speed	0..15-100% Speed 17..31-Blank 32..255- 25%-200% Speed
5	Dimmer	0..255-0%-100%
6	Size	0..255-0%-100%
7	X size	0- Original pattern size 1..255-0%-100% Pattern size
8	Y size	0- Original pattern size 1..255-0%-100% Pattern size
9	Rotation	0..255- 0° -360°
10	X position	0-Left 128-Center 255-Right
11	Y position	0-Bottom 128-Center 255-Top
12	Visible point	0-All points invisible 255-All points visible
13	Scanner speed	0..31-Default speed 32..255-25%-200% Speed
14	Blank	Blank

15	Color	0..31 Original color 32..224 Mixing color 225-255-White
16	Blank	Blank

Operation by software QuickShow

Pangolin FB4 QuickShow opens up a whole new world of possibilities for professional laser show control, allowing you to run your laser shows in a complete network setup (using standard CAT5 or CAT6 cable). It can also be controlled using ArtNet, and it features on-board SD card memory (for automatic show playback). You can operate FB4 Standard from a lighting console, PC, or in auto-mode. And the full color OLED display on FB4 Standard also provides control over a variety of projector settings (including colors, safety, geometric correction and more).

Software interface:



To download the program:

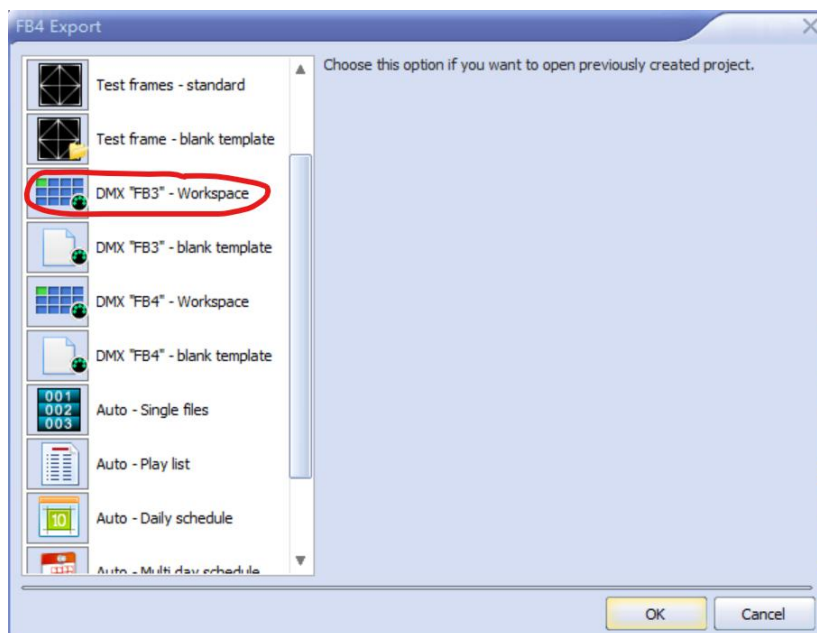
1. Start the software QuickShow



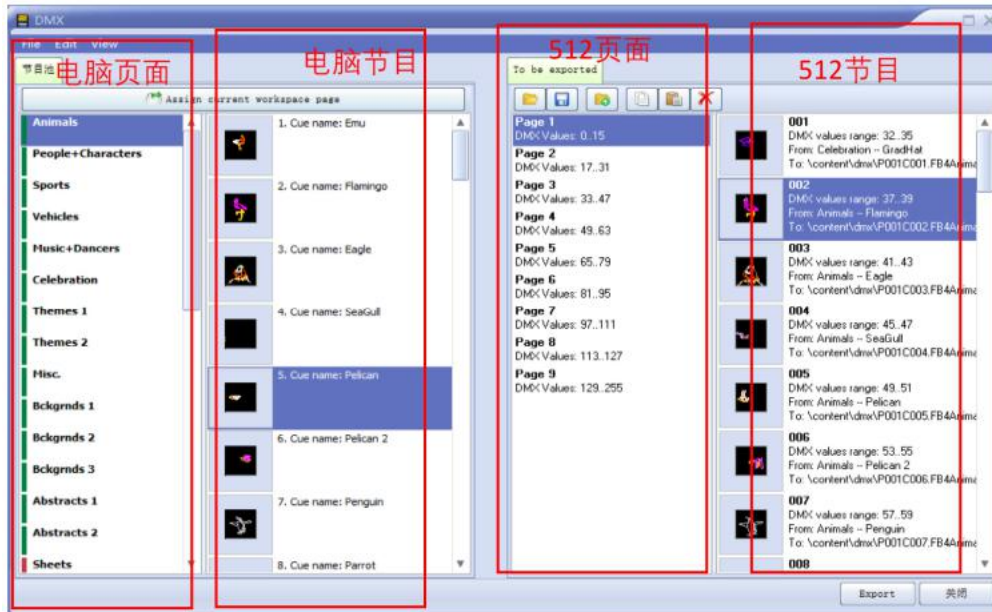
2. Click menu - file, select FB4-Export.



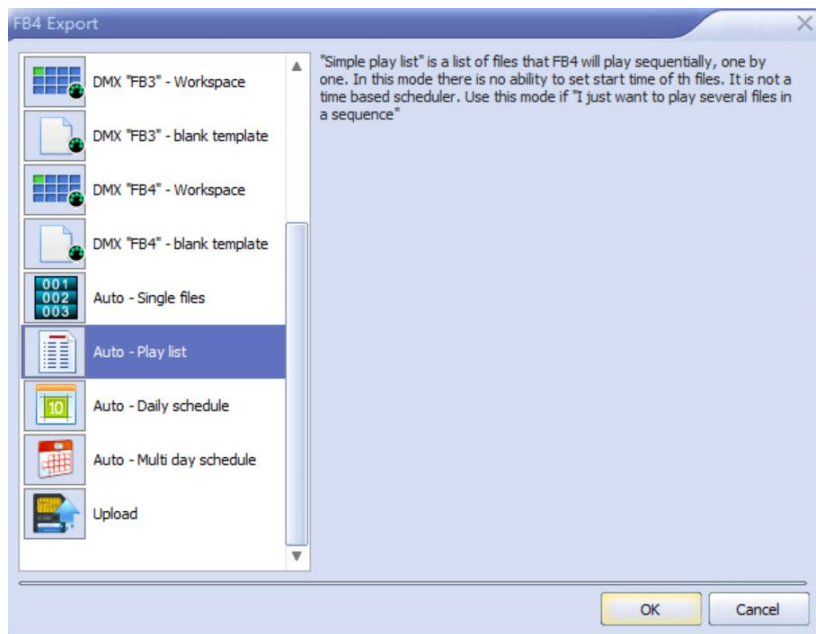
3. Select DMX "FB3" -Workspace.



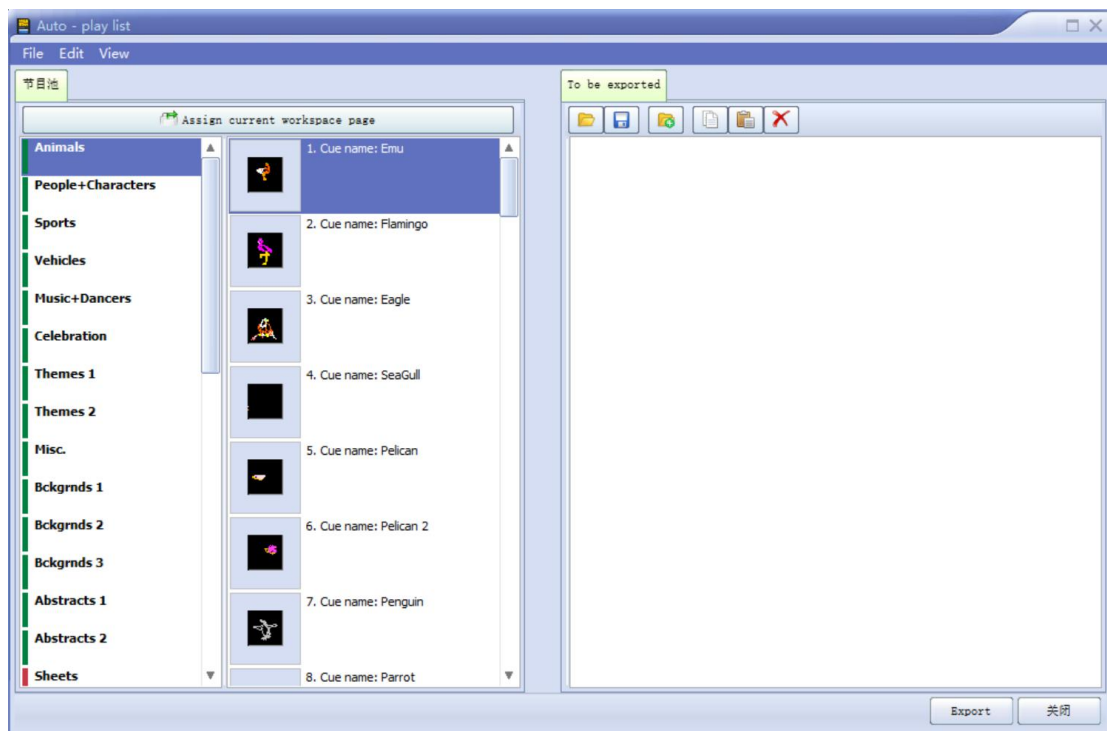
Then select the program files to export, select the cue list from the 512 pages to import the files.



4. Select “Auto-play list” .



Select the programs to export, double click the programs and then the files will go to the zone TO BE EXPORTED, finally click the Export at the bottom right.



5. Have the imported files copied and pasted to the according folder under the folder CONTENT of SD card.

